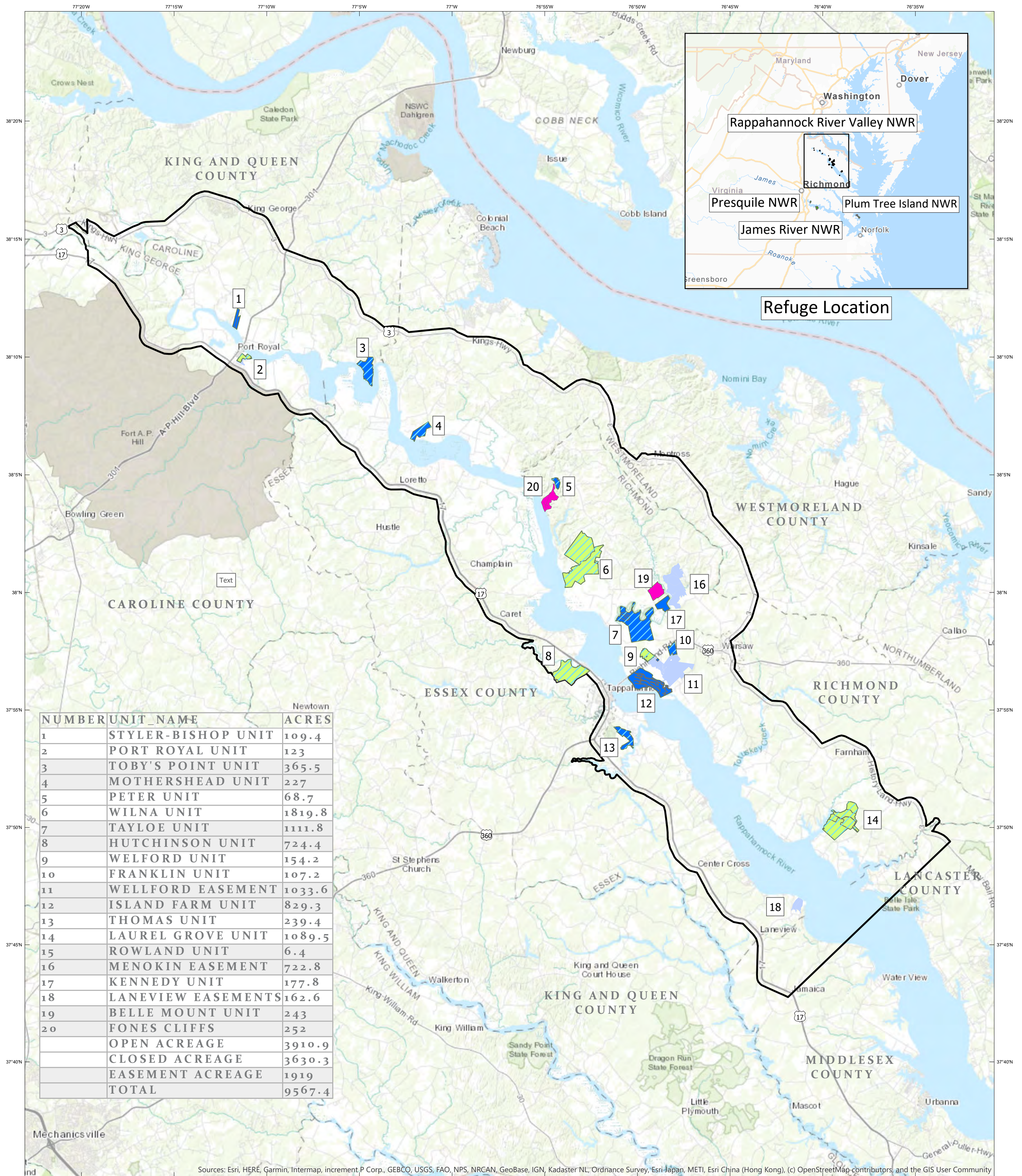




Rappahannock River Valley National Wildlife Refuge

Caroline, Essex, King George, Lancaster, Middlesex, Richmond, and Westmoreland Counties, Virginia



NUMBER	UNIT_NAME	ACRES
1	STYLER-BISHOP UNIT	109.4
2	PORT ROYAL UNIT	123
3	TOBY'S POINT UNIT	365.5
4	MOTHERSHEAD UNIT	227
5	PETER UNIT	68.7
6	WILNA UNIT	1819.8
7	TAYLOE UNIT	1111.8
8	HUTCHINSON UNIT	724.4
9	WELFORD UNIT	154.2
10	FRANKLIN UNIT	107.2
11	WELLFORD EASEMENT	1033.6
12	ISLAND FARM UNIT	829.3
13	THOMAS UNIT	239.4
14	LAUREL GROVE UNIT	1089.5
15	ROWLAND UNIT	6.4
16	MENOKIN EASEMENT	722.8
17	KENNEDY UNIT	177.8
18	LANEVIEW EASEMENTS	162.6
19	BELLE MOUNT UNIT	243
20	FONES CLIFFS	252
	OPEN ACREAGE	3910.9
	CLOSED ACREAGE	3630.3
	EASEMENT ACREAGE	1919
	TOTAL	9567.4

Sources: Esri, HERE, Garmin, Intermap, increment P Corp., GEBCO, USGS, FAO, NPS, NRCAN, GeoBase, IGN, Kadaster NL, Ordnance Survey, Esri Japan, METI, Esri China (Hong Kong), (c) OpenStreetMap contributors, and the GIS User Community

- Approved Acquisition Boundary
- Open Refuge Unit
- Closed Refuge Unit
- Easement
- Hunting Allowed (Permit Only)
- Future Open Refuge Unit

* Open Refuge Unit: Allowed uses include fishing, hiking, wildlife observation, photography & environmental education.
 *Easement: Private land under FWS conservation agreement.

Produced by Rappahannock River Valley Refuge
 Warsaw, Virginia
 Land Status Current To: 9/2019
 Map Date: 17 September 2019
 Basemap: ESRI / DOE - FWS
 Web Mercator Projection
 NAD 83

